

POWER

*Summary of Malcolm X
Message to the grassroots*

THE HISTORY OF ALL REVOLUTIONS IS BASED IN BLOOD AND LAND. THE LAND-LESS AGAINST THE LANDLORD, IN PURSUIT OF INDEPENDENCE, WITHOUT LOVE LOST, WITHOUT COMPROMISE, WITHOUT NEGOTIATION*. WE, AS A PEOPLE, ARE RARELY ACQUITTED TO REVOLUTION BECAUSE REVOLUTION ARE ACCOMPANIED BY BLOOD...AND WE ARE AFRAID TO BLEED.

VALUES

OUR COLLECTIVE VALUES ARE VALIDATED THROUGH THE SPACES AND PLACES WE DESIGN. IN A RACIST SYSTEM, WE CREATE MONUMENTS TO THE HUBRIS AND VIOLENCE OF WHITE SUPREMACY THROUGH THE BUILT ENVIRONMENT.

CARE

Dr. Cornel West

DESIGN JUSTICE IS WHAT LOVE LOOKS LIKE IN PUBLIC SPACES. SPATIAL DESIGN SHOULD BE A DEEP REFLECTED AND PROJECTED EXPRESSION OF CARE FOR A BELOVED COMMUNITY EXPRESSED IN PHYSICAL FORM.



**FOR NEARLY EVERY INJUSTICE THERE IS AN
ARCHITECTURE, A PLAN, A DESIGN TO SUSTAIN IT.**

**DESIGN JUSTICE FORWARDS THE RADICAL LIBERATORY
VISION OF RACIAL, SOCIAL AND CULTURAL REPARATION
THROUGH THE PROCESS AND OUTCOMES OF DESIGN.**

**DESIGN JUSTICE SEEKS TO CHALLENGE THE PRIVILEGE
AND POWER STRUCTURES THAT USE ARCHITECTURE AND
DESIGN AS A TOOL OF OPPRESSION.**

At the root of housing, transportation and economic injustice there are remnants of redlining and covenants that continue to extract wealth and codify structural or de facto segregation. At the root of environmental racism is an infrastructure that exhausts 39% of our carbon emissions, demands 40% of our energy production, and drives climate change. At the root of the unjust policing is a prison industrial complex sustained by spaces that extract human dignity and economic potential from marginalized people in the name of profit. At the root of food and commercial insecurity is a capital market system that prioritizes profits over people at every turn. The force of these issues are often invisible but they are not insurmountable.

POWER

Control of our built environment, of the land and all of its derivatives, is by far the most efficient way to consolidate power.

Those who hold power in place establish the policies, procedures as directives for society at large.

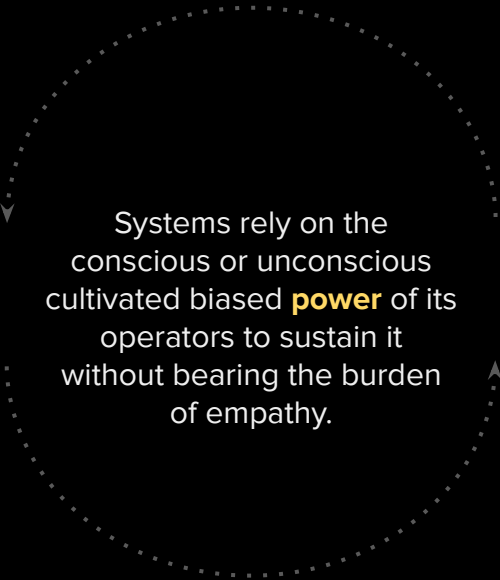
By controlling land and subsequently the material realities beholden to it makes it substantially easier to control people, en masse, shape societies and cultures.

culture shapes our built environment

We design as protest because protest responds to and shifts power in service of the people

A distinctive
practice,
system, or
philosophy,
principle or
doctrine.

ism



Systems rely on the
conscious or unconscious
cultivated biased **power** of its
operators to sustain it
without bearing the burden
of empathy.

ist

An **operant** of
a practice,
system or
philosophy,
principle or
doctrine.

CULTURE



Intersectional
cultural Identity



COMMUNITY

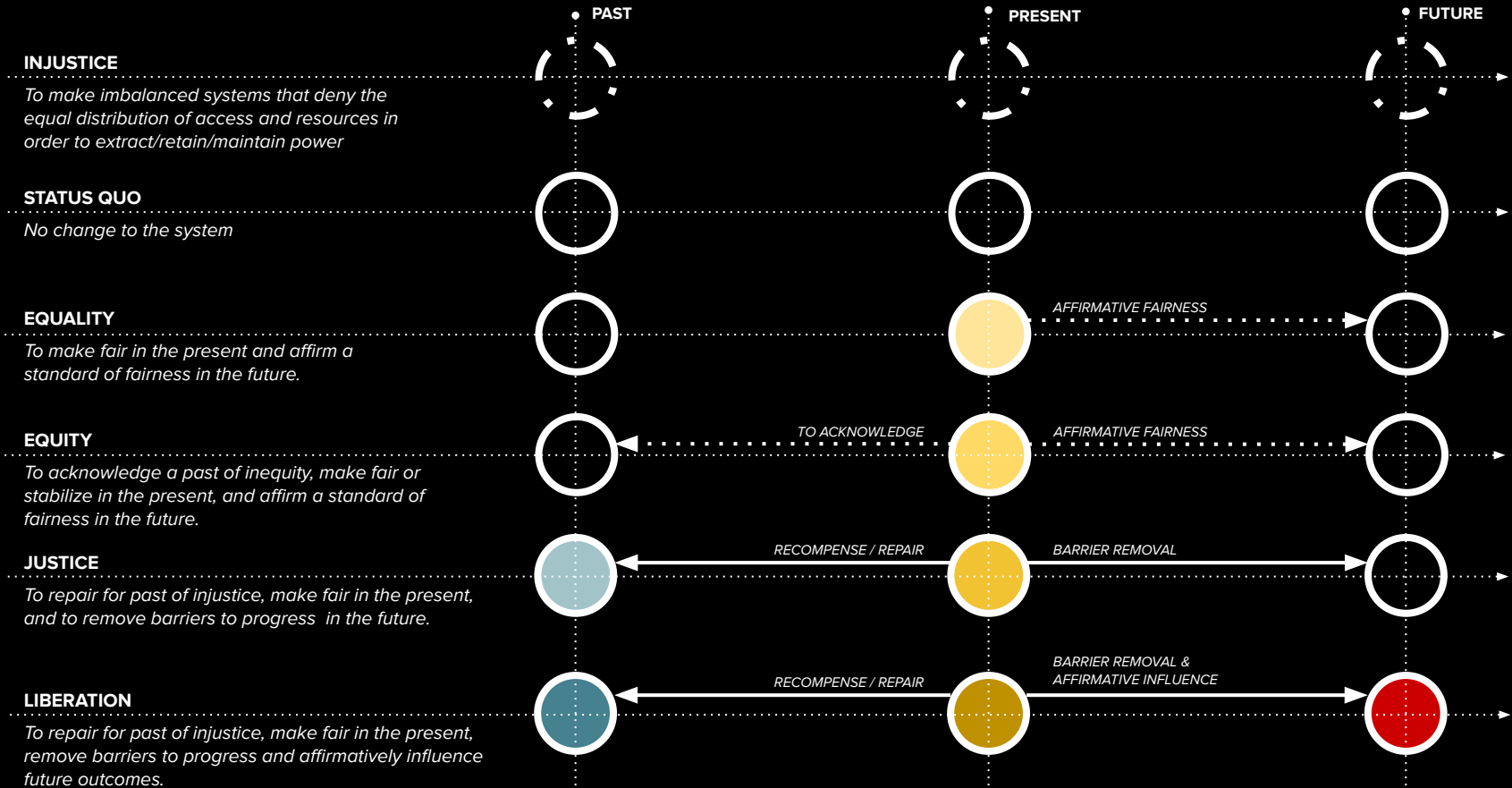
Pattern of reactions to
prevailing environmental,
geographic, social, political
forces.

“ISMS” : BIASED POWER

Biased power of prevailing
environmental, geographic,
social, political forces



STATUS QUO TO LIBERATION



ANTI RACIST. DESIGN JUSTICE. LIBERATORY PRAXIS.

NARRATIVE **ACKNOWLEDGE + REPRESENT**

Acknowledging and establishing the lived histories of racially marginalized segregated people is a minimum. From a design perspective that requires us to deeply find those narratives and stories into the fabric and landscape of our neighborhoods, towns, and cities.

MUTUAL-AID **ACCOUNTABILITY**

To structure our actions around the mutuality of our existence and to ensure that the material needs of our communities are met. Design Justice should be a deep expression of care for a beloved community expressed in physical form.

DECONSTRUCT + CONSTRUCT **DISMANTLE + CREATE**

White supremacy and colonial mindsets are inherent to the structures of power that we operate under presently. Dismantling this system requires a considered collective effort to deprogram and decolonize our selves and our systems in order to sustain any long-term efforts around anti-racism and toward liberation. In the built environment this requires us to actively dismantle the overt expressions of dominance and Supremacy made manifest through the physicality of architecture, landscape, and urban planning.

FUTURESETTING **AFFIRMATIVE INFLUENCE**

One of the most effective tools in the maintenance of racist systems is the delimiting of imagination. The ability to collectively share a vision for a just Future is essential in reaching a space of liberation and freedom. The built environment plays a part in imagining what is possible conditioned upon a past of Injustice but reliant on the cultural reverence and resistance that makes all futures possible.

COLOR TO CULTURE

COLOR

Base identifier linked to the similarity of skin color of an individual or group of people. The lowest common denominator of separation classification. Superficial in nature. The precursory delineating marker that gives race classifications their principle argument.

Base Descriptor

RACE

Race is a projected classification of humans into groups based on base physical characteristics. The color on ones skin being a foundational separator. Race has been used as a means to stratify and subjugate certain groups and privilege others for centuries.

Societially Defined

NATIONALITY

A people belonging or deriving from a particular land. Nationality locates ones lineage either directly or by heritage to a specific regional place.

Politically Defined

ETHNICITY

The fact or state of belonging to a social group that has a common national or cultural tradition.: "the interrelationship between gender, ethnicity, and class" "the diverse experience of women of different ethnicities.

Land Defined

HERITAGE

Heritage is a person's unique, inherited sense of family identity

Familial

CULTURE

The consequence of persistent collective circumstance (systemic oppression, geographic isolation, War, Poverty, policy, wealth inequality, etc.) and immediate individual conditions (Maslow's hierarchy). It is the subtle adaptation of mental and physical processes in order to manage those immediate conditions and adhere to a path of least resistance, ultimately manifesting habitual tendencies and leading to entrenched cultural values.

Community Defined



In
response
to
Nat
Turner.

The Revised Code

OF THE

LAWS OF VIRGINIA :

BEING

A COLLECTION OF ALL SUCH ACTS

OF THE

GENERAL ASSEMBLY,

OF A PUBLIC AND PERMANENT NATURE, AS ARE NOW IN FORCE ;

WITH A GENERAL INDEX.

TO WHICH ARE PREFIXED,

THE CONSTITUTION OF THE UNITED STATES ;

THE DECLARATION OF RIGHTS ;

AND

THE CONSTITUTION OF VIRGINIA.

Published pursuant to an act of the General Assembly, entitled "An act providing for the re-publication of the Laws of this Commonwealth," passed March 12, 1819.

VOLUME I.

RICHMOND :

PRINTED BY THOMAS RITCHIE,
PRINTER TO THE COMMONWEALTH.

1819.

religious worship, when such worship is conducted by a negro, and every assemblage of negroes for the purpose of instruction in reading or writing, or in the night-time for any purpose, shall be an unlawful assembly: any Justice may issue his warrant to any officer, or other person, requiring him to enter any place where such assemblage may be, and seize any negro therein; and he, or any other Justice, may order such negro to be punished with stripes.

“ Sec. 32. If a white person assemble with negroes for the purpose of instructing them to read or write, or if *he* associate with them in an unlawful assembly, *he* shall be confined in jail not exceeding six months, and fined not exceeding one hundred dollars; and any Justice may require *him* to enter into a recognizance, with sufficient security, to appear before the Circuit, County, or Corporation Court, where the offence was committed. at its next term. to answer therefor: and in the



The American Missionary



VOL XXXVI - MAY, 1882. NO 5.

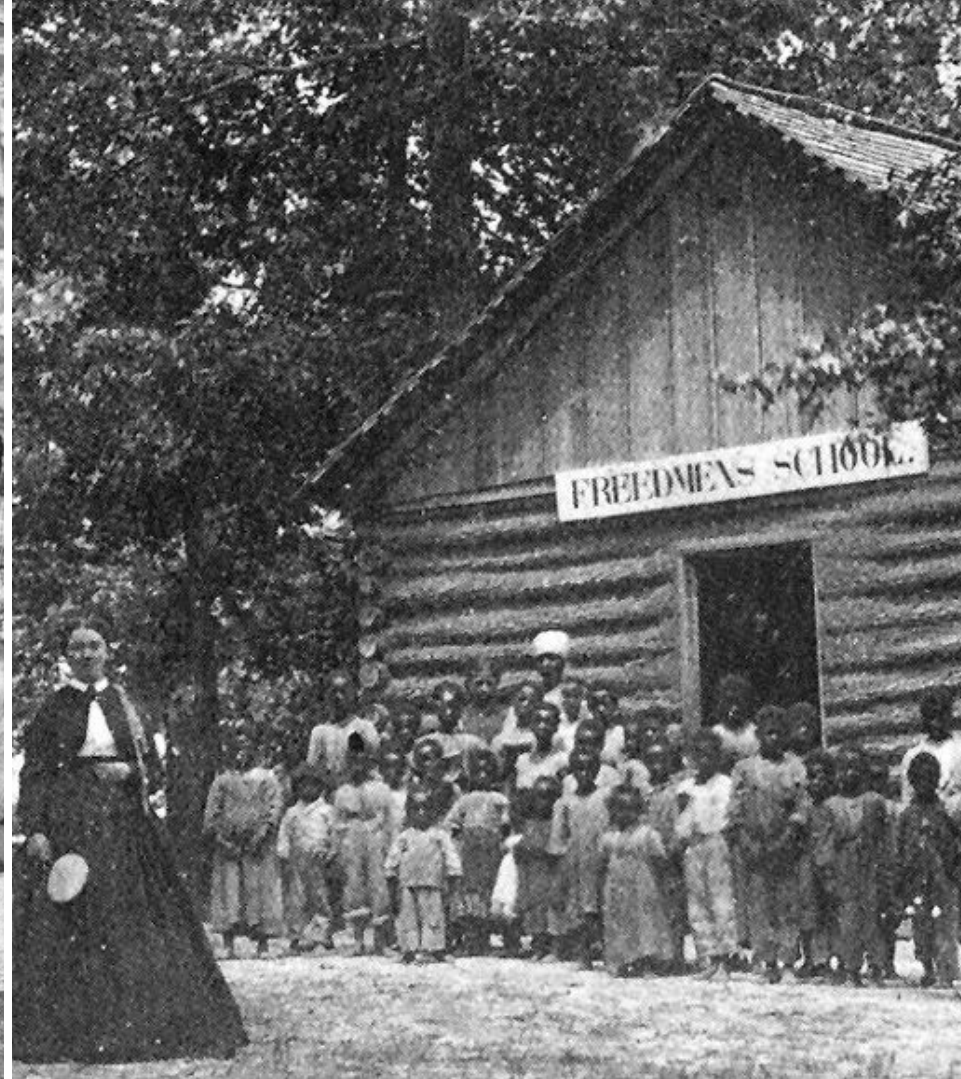
THE American Missionary

"THEY ARE RISING" "WHITE TOGETHER" "ALL ARE RISING" "THE BLACK AND"

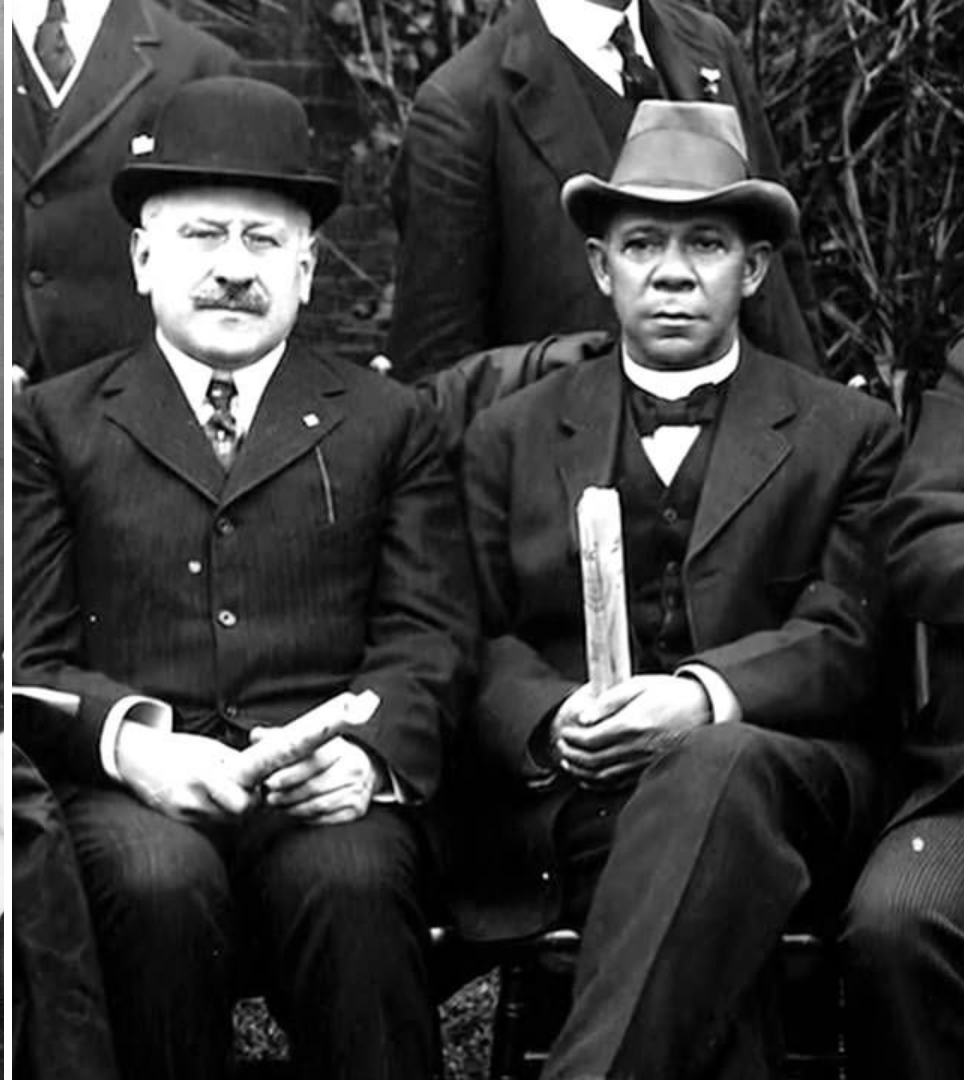
HOLY BIBLE

NEW YORK:
PUBLISHED BY THE AMERICAN MISSIONARY ASSOCIATION,
ROOMS, 66 READE STREET.
Price, 60 Cents a Year, in Advance.
Entered at the Post-Office at New York, N. Y., as second class matter

The cover features a central illustration of a man in a suit holding a large Bible. Surrounding him are four circular portraits of other men. Above the central figure are banners with the phrases "THEY ARE RISING", "WHITE TOGETHER", "ALL ARE RISING", and "THE BLACK AND". Below the portraits is another illustration of a man in a cap. At the bottom, there are two detailed illustrations of church buildings. The entire cover is framed with decorative scrollwork and contains publication information at the top and bottom.





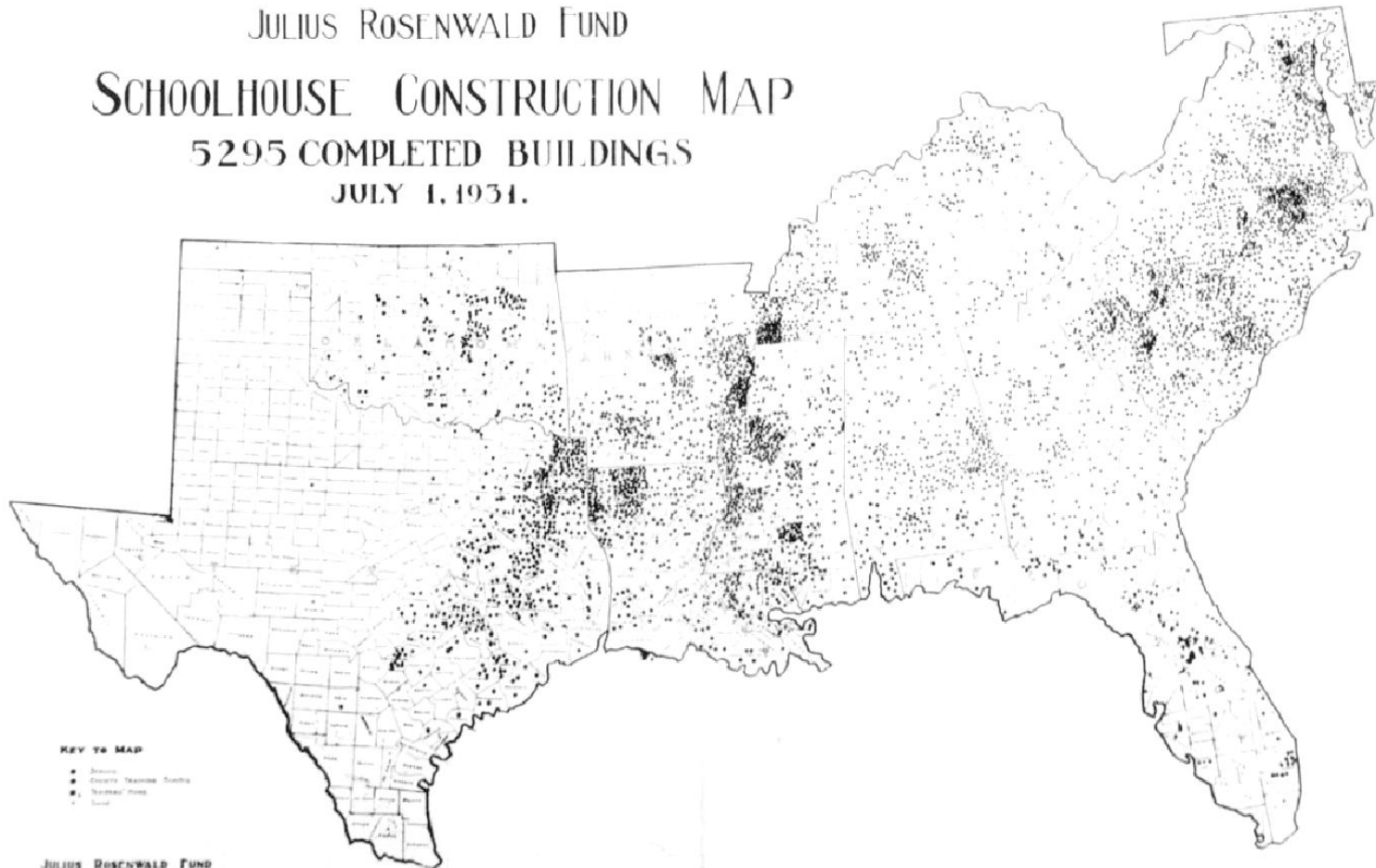


JULIUS ROSENWALD FUND

SCHOOLHOUSE CONSTRUCTION MAP

5295 COMPLETED BUILDINGS

JULY 1, 1931.



KEY TO MAP

- Schools
- County Training Schools
- Normal Schools
- Land

JULIUS ROSENWALD FUND
CHAIRMAN: GEORGE W. BROWN
MANAGED BY: HENRY W. HARRIS
NEW YORK, N. Y.